

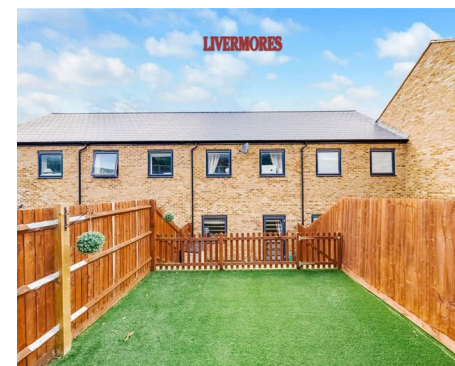


2 Bedrooms

House - Terraced

Located in Dartford

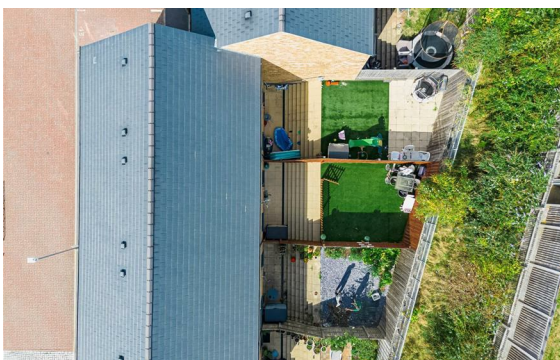
£385,000



dartford@livermores.co.uk

www.livermores.co.uk

01322 228090



LIVERMORES
THE ESTATE AGENTS

1 Hythe Street
Dartford
Kent
DA1 1BE

01322 228090

dartford@livermores.co.uk

www.livermores.co.uk

PRICE GUIDE £385,000 TO £400,000 This modern two-bedroom terraced house is located on a sought after development, this delightful property is situated just two-thirds of a mile from Dartford Station, making it an ideal choice for commuters seeking convenience and accessibility. The property would make either an excellent first time buy or investment and comprises, spacious reception room, fitted kitchen and a cloakroom to the ground floor, with 2 bedrooms and a bathroom situated on the first floor. The property is double glazed and has an allocated parking space. This modern development is close to the town centre and the property is in excellent condition. VIEWING HIGHLY RECOMMENDED.

Energy Efficiency Rating: B

Agents Note: Whilst every care has been taken to prepare these particulars, they are for guidance purposes only. All measurements are approximate and are for general guidance purposes only and whilst every care has been taken to ensure their accuracy, they should not be relied upon and potential buyers/tenants are advised to recheck the measurements.